



Switchgear type BPP2-5B1

for rated voltage 500V



Through connection block type BPP2-5B1 is a device designed for use in underground mining pits in non-explosive coal dust conditions and on the ground.

Through connection block type BPP2-5B1 is designed for connecting and distributing power in mine distribution three-phase grid with insulated star point on the transformer (system IT) for rated power grid voltage of 500V.

TECHNICAL DATA:

ingress protection	IP54
rated power supply voltage	500V, 50Hz
no number of outlets	5
rated current of terminals on supply side	400 A
outlet rated current	160 A
dimensions	1400 x 550 x 350mm (H x W x D)
weight	60 kg

CONSTRUCTION

The through connection block is composed of a housing mounted a frame construction, equipped with brackets. The frame construction allows the device to be hung on the pit wall.

MODE OF OPERATION

In 3x500V main circuit the through connection block is equipped with a two-position switch Q. Every position of the switch can be locked by putting a lock on the switches drive lever.

Through connection block is equipped with protection against low insulation resistance. On the face of block is situated indicating lamp which inform us about level of insulation resistance of outlet.

Blocks type BPP2-5B1 is designated to distributing power in mine grid.

SCHEMATIC DIAGRAM

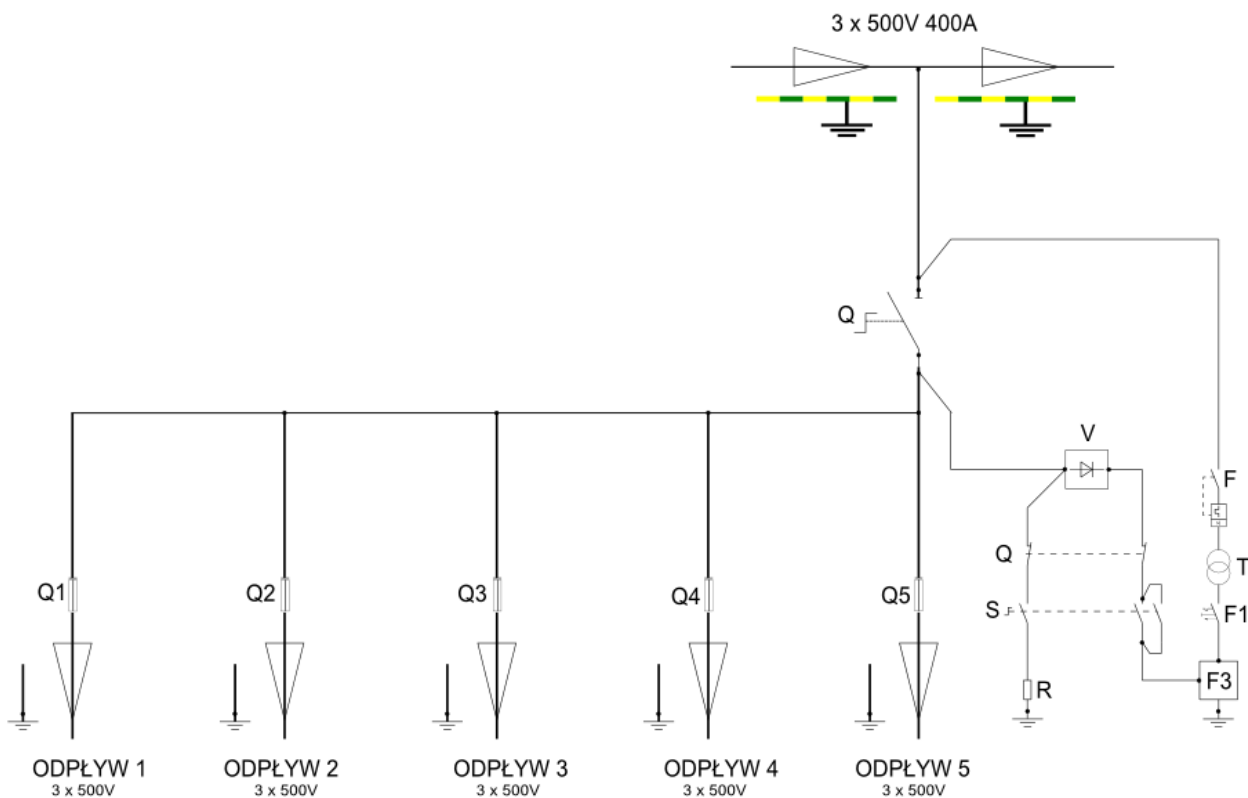
Legend:

Odplyw 1,2,3,4,5 – **Outlet 1,2,3,4,5**

Q – **disconnector**

Q1-Q5 – **fuse disconnector**

F3 - **insulation resistance protection**



Orders should be submitted in writing or by fax to the address:



Instal-Service PL

Spółka z ograniczoną odpowiedzialnością
Spółka komandytowa

58-506 Jelenia Góra, ul. Wrocławska 15a

tel. (+48 075) 64-57-950

fax. (+48 075) 64-57-951

e-mai: instal@instal-service.pl